

RESEARCH SKILLS SEMINAR SERIES 2016

Getting the Most out of Supervision

for clinical researchers, research students and their supervisors

The seminar covers

- Selecting suitable research projects
- Supervision frequency and time allocation
- Supervision styles and flexibility
- Dealing with remote supervision and multiple supervisors
- Rights and responsibilities

Friday, 12 Feb 2016

12:30 - 1.30pm

**Macdonald Lecture Theatre
Ground Floor, Administration
Building | Princess Margaret
Hospital | Roberts Road | Subiaco**

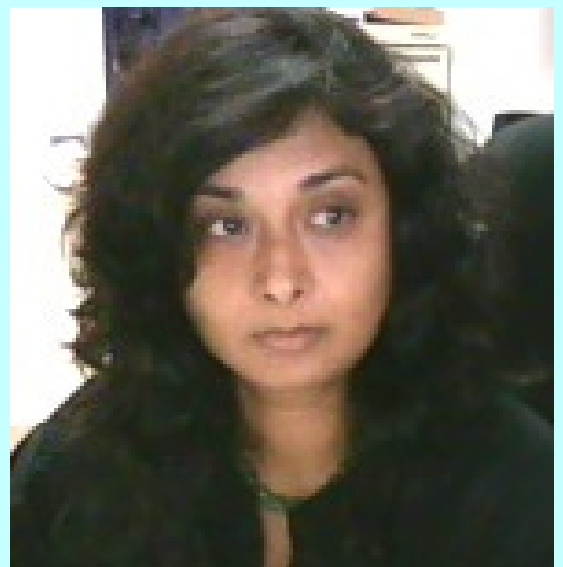
**RSVP by Tue 10 Feb 2016
via [online registration](#)**

**Attendance via video-link
available**

**Contact and further information
PMH.CAHSREP@health.wa.gov.au**

Associate Professor Sunalene Devadason

Sunalene is the Research Governance Manager, and Coordinator of the Postgraduate Program for UWA's School of Paediatrics and Child Health (SPACH). She has extensive experience as a research governance officer and researcher.



To view the entire 2016 seminar series visit <http://www.wahtn.org/news-events>



In collaboration with the Western Australian Health Translation Network (WAHTN)