



HARRY PERKINS INSTITUTE
OF MEDICAL RESEARCH



PERKINS Seminar Series

www.perkins.org.au

THURSDAY 4 OCTOBER



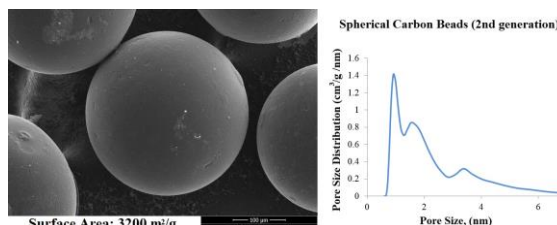
Dr Piotr Kowalczyk

Senior Lecturer in Physics
Murdoch University

"Adsorption and Release of Organics from Engineered Spherical Carbon Beads"

Piotr Kowalczyk is a Senior Lecturer in Physics at the Murdoch University. His research aims at a fundamental understanding of the structure-functionality relationship of exotic and classical carbon nanomaterials. Piotr held the position of the Assistant Professor in Soft Condensed Matter, Institute of Physical Chemistry, Polish Academy of Science between 2004-2005. He completed his PhD at the Faculty of Science, Chiba University, Japan in 2004 in Prof. Kaneko's Laboratory. He has received the University of Queensland and Irish Research Council for Science, Engineering and Technology Postdoctoral Fellowship (2006), Curtin University Senior Research Fellowship (2010), and the Japan Society for the Promotion of Science Invitation Fellowship (2013). Since joining Murdoch University his work has focused on the synthesis, characterization, and molecular modelling of nanopore-engineered carbon nanomaterials to create novel adsorbents, drug carriers and selective membranes. Piotr has co-authored ~135 refereed journal articles, 9 books chapters and co-edited one book (*h*-index 28 Scopus).

A Graphical abstract:



12:00noon till 1:00pm
Followed by a light lunch

For more information, please contact Juliana Hamzah

E: Juliana.hamzah@perkins.uwa.edu.au

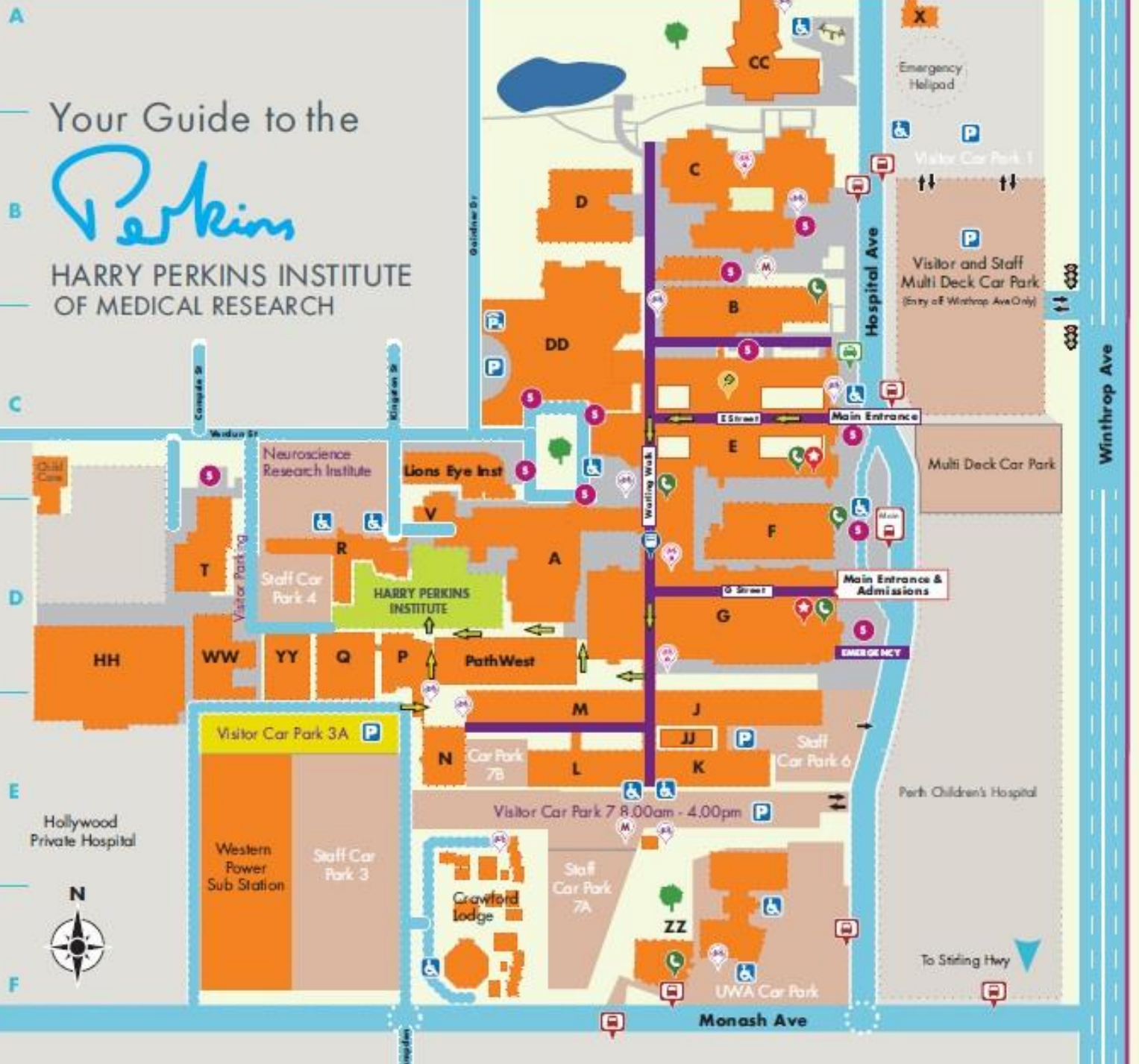
MCCUSKER AUDITORIUM, HARRY PERKINS INSTITUTE OF MEDICAL RESEARCH, NORTH CAMPUS

Aberdare Rd

Your Guide to the



HARRY PERKINS INSTITUTE OF MEDICAL RESEARCH



Hollywood Private Hospital

Western Power Sub Station

Crawford Lodge

Perth Children's Hospital

To Stirling Hwy

Winthrop Ave

Monash Ave

Hospital Ave

Galindree Dr

Weston St

Kingsford St

Visitor Car Park 3A

Staff Car Park 4

HARRY PERKINS INSTITUTE

PathWest

Car Park 7B

Staff Car Park 7A

Visitor Car Park 7 8.00am - 4.00pm

Staff Car Park 6

UWA Car Park

Multi Deck Car Park

Visitor and Staff Multi Deck Car Park (Entry off Winthrop Ave Only)

Visitor Car Park 1

Emergency Helipad

Main Entrance

Main Entrance & Admissions

EMERGENCY

Waiting Walk

D Street

E Street

CC

C

D

DD

V

Lions Eye Inst

R

A

E

F

G

J

JJ

K

N

L

M

JJ

K

ZZ

A

B

C

D

E

F

1

2

3

4

5

To P