



WAHTN
Western Australian Health Translation Network

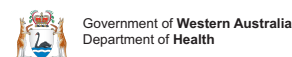
ANNUAL REPORT 2022



Contact

Website wahtn.org
Email info@wahtn.org
Phone (08) 6151 0887

Partners



Information within this publication is correct at the time of printing but is subject to change.

Contents

Introduction

Executive Director's Foreword	4
Chairman's Foreword	5

About Us

About WAHTN	6
-------------	---

Year In Review

2022 at a glance	7
Consumer and Community Involvement Program (CCIProgram)	8
Research Education and Training Program (RETProgram)	10
Clinical Trials Enabling Platform of Western Australia (CTEP-WA)	12
Science On The Swan 2022	14

State-wide Initiatives

Data Linkage Biobanking National Imaging Facility (WA Node)	16
Clinical Research Training Program	17

National Initiatives

Women's Health Research Translation & Impact Network	18
National Wound Care Initiative	20
AHRA Consumer and Community Involvement Initiative	22

Acknowledgements

WAHTN acknowledges the traditional custodians throughout Western Australia and their continuing connection to the land, waters and community. We pay our respects to all members of the Aboriginal communities and their culture and to Elders past and present.

WAHTN also acknowledges the importance and expertise of the lived experience voice of health consumers and carers. We recognise their involvement in making a difference in supporting health research and impacting the health and wellbeing of our communities.

Executive Director's Foreword



I am honoured to present the annual report of the Western Australian Health Translation Network (WAHTN) for the year 2022.

As the new leader of WAHTN, I have had the privilege of working closely with all our partners over the past eight months. During this time, we have been focused on strengthening our relationships and creating a shared vision for the Network.

In December 2022, we held the Partner Forum where we brought together all 23 partners to reflect on our activities and identify focus areas for 2023. Based on the feedback we received, we have developed a 100-day plan that outlines key actions required to establish a clear direction for the Network and ensure that we can effectively deliver on our priorities for the next 1-2 years.

In this year's annual report, we highlight our key achievements in our enabling platforms, provide updates on national initiatives, and

showcase our collaborations. You will also find information on the key events that we held, including the Science on the Swan Conference, and how they made significant contributions to our health and medical sector.

At WAHTN, we are committed to excellence, and we strive to improve our services to our partners while building on our strengths as a network of health researchers, practitioners, and organisations. We remain focused on developing new and innovative approaches to assist research and health translation, while continuing to prioritise supporting our members and delivering tangible benefits to the Western Australian community.

I would like to take this opportunity to express my sincere gratitude to our members, partners, and stakeholders for their unwavering support and collaboration throughout the year. Your commitment to improving health outcomes and advancing research in Western Australia is truly inspiring, and I am excited to continue working together in the years ahead.

A handwritten signature in blue ink that reads "Ian Paul Overall". The signature is fluid and cursive, with a horizontal line underneath the name.

Executive Director
Prof Ian Paul Overall

February 2023

Chairman's Foreword



As the Chairman of WAHTN, I am thrilled to witness the Network's continued growth as an effective and trustworthy mediator for individuals and groups in the health and medical sector.

This report highlights the many achievements of WAHTN, including the success of enabling platforms, key events, and national initiatives. It is evident from the report that WAHTN plays a vital role in the ecosystem, and I am particularly impressed by the Network's impact on the community within Western Australia and its presence on the national and international stage.

I would like to express my gratitude to the heads of organisations from our 23 partners, and our wider stakeholders for their support of the Network.

Furthermore, I would like to thank the outgoing Chair, Malcolm McCusker, and Executive Director, Gary Geelhoed, for their devoted service to WAHTN and significant contributions to the health and medical sector in Western Australia.

Additionally, I would like to commend Ian Everall, Debbie Turner, and the entire WAHTN team for their exceptional work in maintaining the highest standards of quality.

Finally, I would like to extend my heartfelt thanks to our Board members for their continued contributions to our success.

A handwritten signature in dark ink, likely of The Hon Ian Campbell.

The Hon Ian Campbell
Chairman of the Board

February 2023



Minister Stephen Dawson, Prof Ian Everall, The Hon Malcolm McCusker, The Hon Ian Campbell, Prof Gary Geelhoed

Executive Board



Hon Ian Campbell
Chairman



Prof Ian Everall
Executive Director, WAHTN



Prof Harlene Hayne
Vice Chancellor Curtin University



Mr Paul Forden
Chief Executive, South
Metropolitan Health Services



A/Prof Dan McAullay
Director of Aboriginal Research,
Edith Cowan University



Prof Bill Morgan
Managing Director
Lion Eye Institute



Ms Suzanna Robertson
Executive Director
Health Consumers's Council of WA



Ms Angela Kelly
Deputy Director General of the
WA Department of Health



Prof Desiree Silva
Director of Research
Joondalup Health Campus

About us

WAHTN is a dynamic and collaborative state-wide Network, bringing together 23 Partner Organisations and seven Associate Partners. Our extensive network encompasses all universities in the state, major medical research institutes, public and private service providers, PathWest, and the WA Department of Health.

What sets WAHTN apart is our unique approach that fosters connections between research staff, health professionals, policy makers, funders, consumers, and the community. By facilitating interactions between researchers and key stakeholders, we provide opportunities to leverage research towards delivering real health outcomes.

Our enabling platforms, including the Consumer and Community Involvement Program (CCIPProgram), Research Education and Training Program (RETProgram), and Clinical Trials Enabling Platform WA (CTEP-WA), serve as the backbone of our operations.

This year, we are proud to have been re-accredited as a Research Translation Centre for a further five years, following our initial recognition by the National Health and Medical Research Council (NHMRC) in 2017. This achievement reflects our unwavering commitment to facilitate and support the sector to improve health outcomes through high-quality research translation.

Our Purpose:

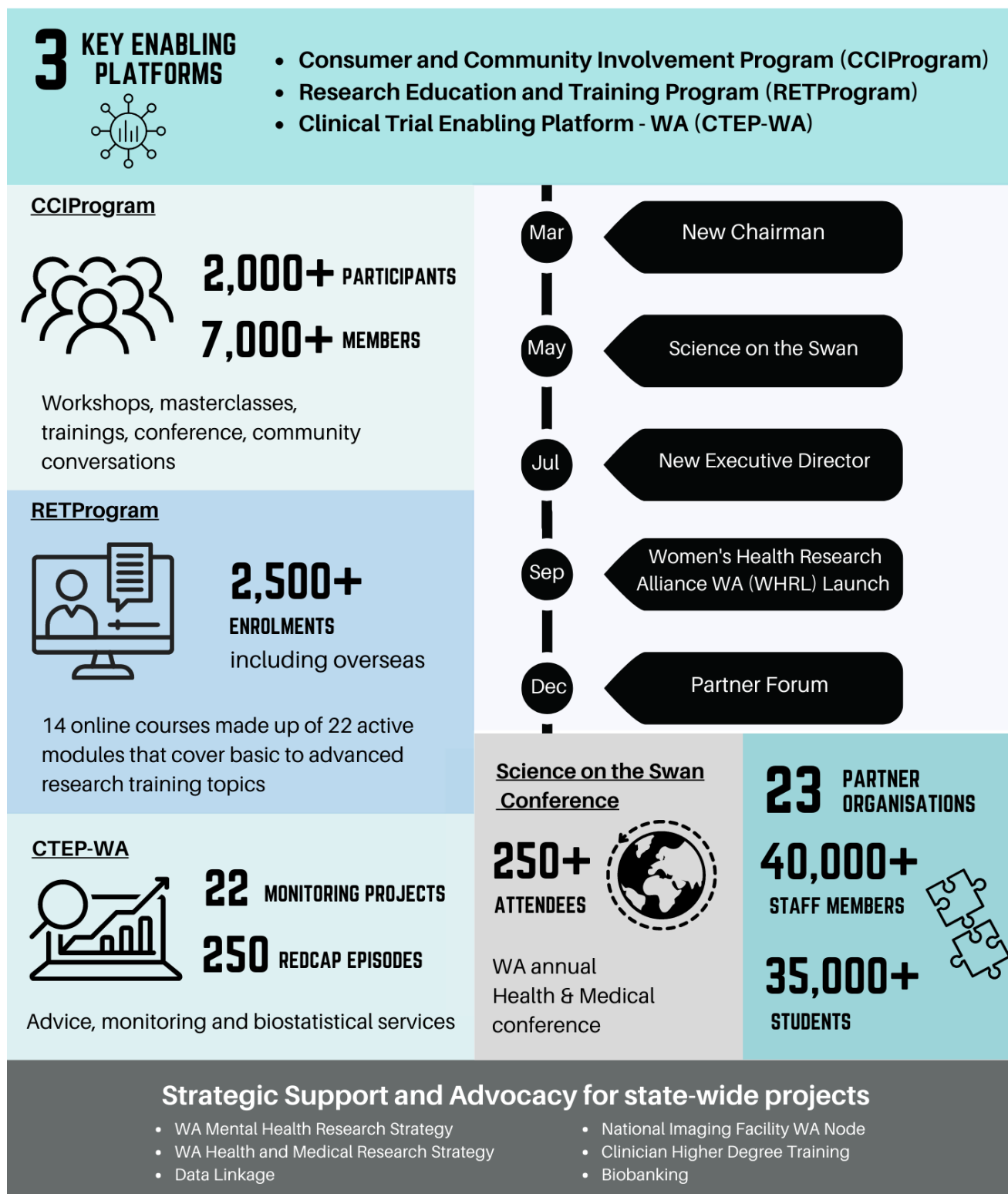
- Promote health research, innovation and translation in response to state and national health priorities
- Unify health researchers, clinicians, educators, consumers, health providers and industry to promote excellence and increase scale and national competitiveness
- Enable excellent research and its translation into policy and practice
- Advocate on behalf of health researchers, clinicians and consumers
- Catalyse increased public and private investment in Western Australia's health research and innovation.

Year in Review

In 2022, WAHTN remained committed to its mission of promoting cross-institutional collaboration among researchers, clinicians, consumers, and funders as well as facilitating large scale state-wide initiatives to enrich the research environment of WA.

The Network also underwent a significant change with the transition of new leadership, marking a new era of growth and development.

Below are the key highlights of WAHTN's activities for the year.





Consumer and Community Involvement Program (CCIProgram)

2022 has been a year of new initiatives, resources and team members as well as providing a high level consumer and community involvement (CCI) support for researchers, consumers, partners, and organisations.

Since its inception, the CCIProgram has experienced remarkable growth in its membership, with access to over 7,000 individuals now connected to our diverse range of involvement opportunities, capacity building training, and comprehensive resources. Additionally, our communication strategies, including newsletters, videos, and social media, have further strengthened our community and facilitated engagement among our members.

Under contractual arrangement, our CCI Coordinators and team have continued to provide best practice, tailored CCI support and resourcing to the University of Western Australia, Murdoch University, University of Notre Dame Australia, Harry Perkins Institute

of Medical Research and the WA Department of Health's Office of Medical Research and Innovation.

We have also been involved in providing CCI expertise, direction and support to a number of state and national initiatives including the Australian Academy of Health Services' '*Harnessing Research for Better Health Care*' project, the WA Comprehensive Cancer Centre, the National Comprehensive Dementia Centre Project, the Tasmanian Collaboration for Health Improvement and Menzies Institute, together with members of the Australian Health Research Alliance. Of note, was the inclusion of the Head, CCIProgram as a keynote speaker in the NHMRC - Consumer Health Forum national online workshop in November regarding the Review of the Statement of Consumer and Community Involvement in Health Research. Deb Langridge has been invited onto the NHMRC Consumer Statement Advisory Committee for the duration of this national project.

WA's First Mental Health Research Strategy

The CCIProgram has contributed to several state-wide initiatives, including the development of WA's first Mental Health Research Strategy. The role of people with a lived experience of mental health challenges has played a pivotal and visible role in the development of priorities for mental health research through the Co-design ROADmap for Mental health Research Strategy WA (Co-ROAMERS WA) project, and the CCIProgram looks forward to continuing to play a major role in this best practice project in 2023.

Masterclass Series

Building the capacity of both researchers and consumers alike in the involvement of people with lived experience in research and innovation has been a significant area of work during late 2022 with the launch and 'sold out' delivery of our first Masterclass Series. Masterclass topics included 'Introduction to CCI', 'CCI and Successful Grant Writing' and 'Writing in Plain Language'.

One of the most remarkable aspects of the Masterclass Series was the diverse mix of attendees, many of whom were new to the CCIProgram and consumer involvement in research. This provided an excellent platform for showcasing and co-presenting the extraordinary work of both researchers and consumers in WA.



Deb Langridge and Prof Fiona Wood

Coffee with CCIProgram Series

Our Spotlight Series is an innovative initiative that showcases engaging interviews and insightful conversations. One of the key highlights of the series is our 'Coffee with the CCIProgram' interviews, which delve into the 'why' and 'how' of CCI in research. In 2023, we anticipate more sessions that demonstrate how to put the theory of involving people with lived experience into research practice.

Our communication initiatives were also expanded to include promotional videos for scheduled Community Conversation events, together with highlight videos post-event. Feedback from our CCIProgram members has been very positive regarding these new initiatives especially how they capture the voices of our researchers and consumers alike. All of our videos are available on our website and YouTube channel, ensuring easy access for everyone interested in learning more about our work.

We are excited about the ongoing growth of WA researchers and CCIProgram Partners recognising the importance and significant role CCI plays in research project priorities, planning and translation and look forward to ways in which we can support and lead in 2023.

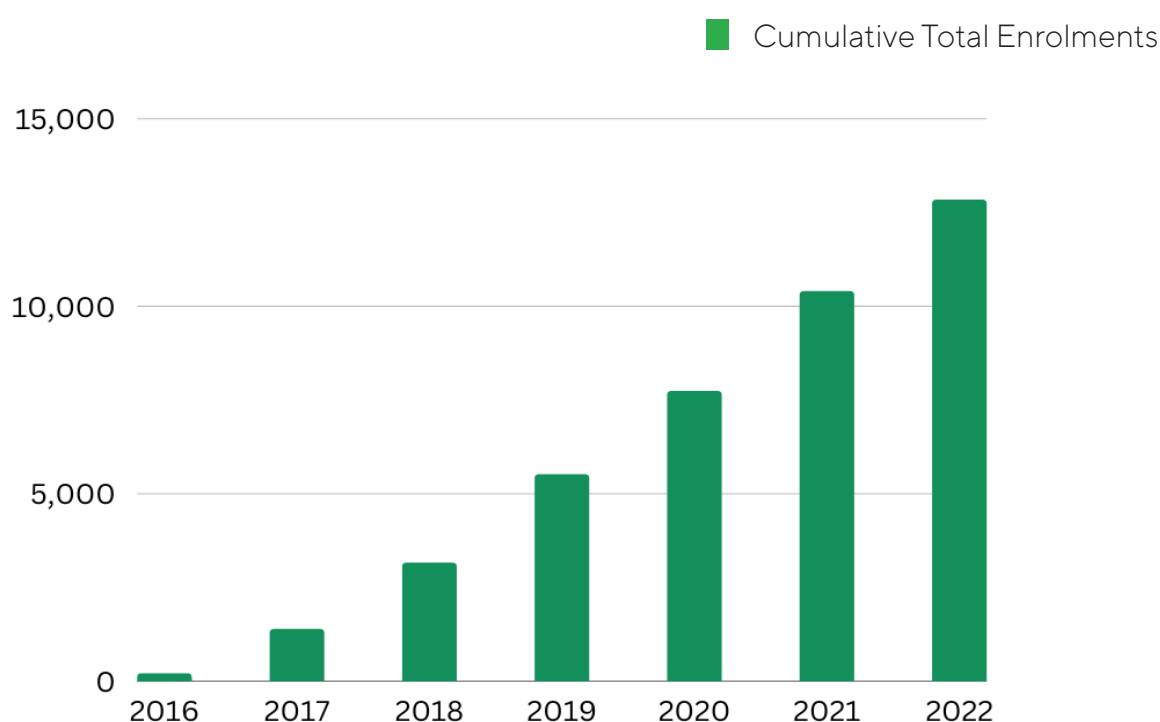
Research Education and Training Program (RETProgram)

RETProgram was established in 2015 as one of WAHTN's key enabling platforms, through funding support from the WA Department of Health. Course writers and reviewers are sourced from across the WAHTN Partner Organisations based on recommendations, expressions of interest or referrals from key researchers.

The RETProgram currently has 14 online courses made up of 22 active modules that cover basic to advanced research training topics. Twelve of the courses are stand-alone research modules, the other two, Good Clinical Practice (GCP) and Research Governance Service (RGS), contain multiple modules. Access to our courses is free for

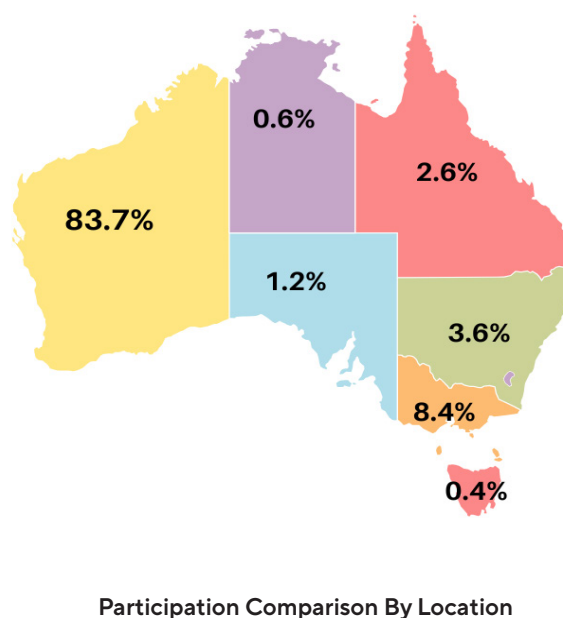
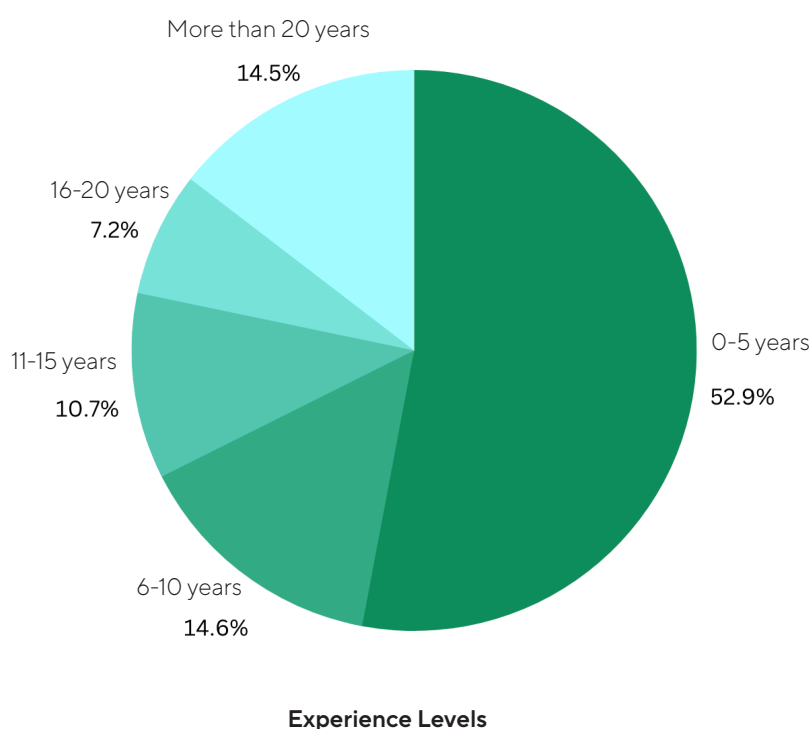
all partner organisations of WAHTN, and we provide online technical support 7 days a week. RETProgram has performed strongly since its beginning, attracting 12,832 course enrolments from 8,276 individual participants with varying levels of experience and from different locations in Australia and worldwide (see diagrams on Page 11).

In 2022, the RETProgram achieved remarkable success, with more than 2,500 enrolments from 180 health and medical institutions worldwide. Our flagship courses, GCP and GCP Refresher, are accredited by TransCelerate and are incredibly popular, not just in WA but across Australia. We are delighted that our newly introduced CCI course has also gained substantial traction among participants.





In 2023, RETProgram and CCIPProgram are planning to collaborate to develop a new online course that builds on the success of our first CCI online course. This course is designed to equip researchers with practical information on how to effectively include consumer and community involvement in their grant applications. By providing a high-level overview of the 'gold standard' for consumer involvement, the course will enable researchers to improve their grant applications and increase their chances of securing funding in the WA sector.





Clinical Trials Enabling Platform (CTEP - WA)

The Clinical Trials Enabling Platform of Western Australia is led by John Curtin Distinguished Professor Chris Reid. The Team was established by the WAHTN in 2018 as the Clinical Trial and Data Management Centre to build capacity in clinical research and enhance the quality of clinical trials and related data management. The team is supported by Curtin University.

Our **Clinical Research Support Service (CRSS)** is a free service for WAHTN Partners involved or interested in conducting clinical research in WA across a range of topics, including: setting up essential documents for a clinical trial; navigating the regulatory environment; data management and database design; study design and data analysis plan; and monitoring plans and self-auditing. The CRSS is particularly suited to clinician and early-mid career researchers.



Prof Chris Reid, Director, Centre for Clinical Research & Education, Head of CTEP-WA



Julia Fallon-Ferguson, Executive Officer

Julia Fallon-Ferguson is responsible for strategic planning, communications, community engagement and contract management. In 2022 she worked collaboratively with a range of organisations, both within WA and nationally, including the Australian Clinical Trial Alliance, Curtin enAble Institute and the Australian Teletrial Program. She performs unblinded monitoring of Investigational Medicinal Products for the CTEP Monitoring Service, and also took on the role of Program Manager for the Health Studies Australian National Data Asset (HeSANDA) in WA.



Dr Jun Chih, Research Fellow (Biostatistics)

Dr Jun Chih leads our Biostatistics Consultancy. She has expertise in study design and statistical analyses in Randomised Controlled Trials, Longitudinal Studies and Machine Learning. Current clients and research partners include public and private hospitals, the Breast Cancer Research Centre WA, enAble Institute for Health Research, WA Centre of Thrombosis and Haemostasis, and the WA Country Health Service. In 2022 Jun provided supervision for Shih Ching Fu, who completed his WAHTN Biostatistics Fellowship in October.



Christine Robins, Clinical Trial Coordinator and Monitor & Auditor

Our **Monitoring and Auditing Service (MAS)**, led by Christine Robins, is rapidly

growing both within WA and nationally due to its excellent quality and cost-effectiveness. From humble beginnings with a single investigator-initiated clinical trial in 2020, the portfolio now boasts 11 trials in progress, four in negotiation, and three completed. Clients include ANZ Society for Cardiothoracic Surgeons (ANZSCTS), Bioscience company Chr. Hansen, Edith Cowan University, Fiona Stanley Hospital, Linear, Monash University, Royal Perth Hospital, Sir Charles Gairdner and St John of God Hospitals, Telethon Kids Institute and The University of Sydney. In 2022, we provided support to 22 projects with advice, monitoring and biostatistical services.



John Barrett, REDCap and Software Architecture

Our team also has expertise in **Research Electronic Data Capture (REDCap) and Software Architecture**. John Barrett is our REDCap Administrator and Senior Software Developer for a wide range of projects and clients. Services provided in the last 12 months include integrating REDCap with Power BI for an MRFF-funded grant; serving as a REDCap consultant for NHMRC grants; and developing custom software to import data for an international collaboration. John also provides technical advice for HeSANDA, the Health Studies Australian National Data Asset initiative, which is building a national infrastructure to support the sharing and reuse of sensitive health research data. In 2022, we provided over 250 episodes of assistance with REDCap.



Science On The Swan 2022

Creating Impact through Healthcare Innovation and Commercialisation.

The Science on the Swan (SOTS) 2022 was a successful three days of captivating talks, insightful discussions, and productive networking, centred on the theme of 'Creating Impact through Healthcare Innovation and Commercialisation'. The event was opened by Minister Stephen Dawson and marked the seventh SOTS conference to be hosted by the WAHTN.

During the opening speech, Minister Stephen Dawson also shared exciting news for the WA Health and Medical sector as he announced the collaboration between Texas Medical Center (TMC), the largest medical city in the world, and Biodesign Australia, which is administered by The University of Western Australia.

This partnership is a huge step in strengthening the State's health and medical science sector promoting research, innovation and commercialisation resulting in greater investment, more local jobs and ultimately, improvements in health and wellbeing.



The Hon Stephen Dawson
Minister for Emergency Services; Innovation and the Digital Economy; Medical Research; Volunteering

"The Science on the Swan was a melting pot and was doing exactly what the Network was meant to do, which is bringing everybody in the sector together for further collaboration "



**PROFESSOR ROMOLA BUCKS
PRO VICE-CHANCELLOR
HEALTH AND MEDICAL RESEARCH
THE UNIVERSITY OF WESTERN
AUSTRALIA**

Over three days, we saw more than 60 presentations from researchers and clinicians across a wide range of expertise, along with panel discussions, posters and many networking opportunities. The program covered a diverse range of topics including opportunities and challenges faced by WA innovators; patent and commercialisation frameworks; consumer and community involvement in innovation, as well as insightful discussions on how we could work together as a sector to enable optimisation of the healthcare environment in WA.

Additionally, the SOTS conference showcased international biomedical innovations with guest speakers including Dr Eyal Zimlichman, MD (Sheba Medical Centre, Israel), Dr Kate Hilyard (UK Vaccine Taskforce) and Prof Michael Wallach (SPARK Oceania).

The keynote speaker for SOTS 2022 was one of our very own WA stars, Dr Craig Challen, 2019 Australian of the Year who shared an inspiring story on how he and Dr Richard Harris led an international crew to save a soccer team of 12 boys and their coach in the 2018 Thai Cave Rescue. This was the ultimate case study in on-the-spot innovation by brilliant people and implementation of techniques not previously trialled with one sole purpose – to save those trapped in the cave. We were also delighted to welcome Dr Ruben Meerman, the surfing scientist, who shared his fascinating discovery on "how breathing helps lose weight".

Congratulations and thank you to everyone who presented, supported, and attended the Science on the Swan 2022 Conference.



**Dr Craig Challen
Australian of the Year 2019**



State-wide Initiatives

In 2022 WAHTN continued to work on state-wide projects and initiatives that allow the Partner Organisations and broader health and medical research sector to accelerate and scale up the translation of research findings into improved health care and contribute to a more efficient and effective health system.

Data Linkage: WAHTN continues to advocate for the streamlining of data processes by holding regular meetings with key stakeholders from the WA Department of Health and the research sector. The aim is to provide updates on national data initiatives, especially within AHRA, as well as continued dialogue on WA Data challenges, with a goal to improve and streamline the use of linked data to provide a better and faster experience for researchers. In order to increase the sharing and reuse of health research data, WAHTN has been successful in establishing one of nine Health Studies Australian National Data Asset (HeSANDA) nodes in Perth. The WAHTN Health Data Node (set up by Australian Research Data Commons) is embedded within the WAHTN CTEP-WA.

Biobanking: WAHTN has been working with its Partner Organisations to establish a harmonised Biobanking sample collection, storage, curation and management system which will allow ethically acceptable standardisation across cohorts and registries and avoid duplication of effort and investment. In 2022 the WAHTN Biobanking Steering Committee met regularly and coordinated the submission of a state-wide Biobank proposal to the Medical Research Future Fund Infrastructure grant round late in 2022 (outcome pending). WAHTN continues to maintain and update the Biobank Registry housed on the WAHTN website which provides

contact details and sample descriptions of 38 WA-based biorepositories ranging across clinical themes and age groups. This resource enables researchers across the state to collaborate, share and access biospecimens.

National Imaging Facility (WA Node):

In 2018, WAHTN established a Medical Imaging Working Group to source sufficient matched funding across the Partner network to expand the National Imaging Facility (NIF) infrastructure located in WA. The WAHTN-led effort has resulted in over \$13 million of funds pledged by State Government, Philanthropic Organisations, Universities and Research Organisations, leveraged off \$6.25 million of Commonwealth NIF funds. The expansion will dramatically improve the biomedical research imaging capability of WA by providing, for the first time, state-of-the art imaging equipment dedicated for human research as well as strengthening the existing preclinical imaging facilities at the current NIF WA node. This will enable WA to not only conduct leading-edge research, but to compete effectively for research project funding and attracting high level clinical trials to WA. The equipment is highly enabling for translational research and has broad applicability across all key medical fields. This expansion is an important step to building WA's capabilities and, when successfully implemented, is expected to increase opportunity for future federal imaging funding. The expansion is made up of a new 3T Human MRI; a new Human PET-CT scanner; an upgrade to the existing 9.5T preclinical MRI; and research support to the Good Manufacturing Practice project for PET radiopharmaceuticals. In 2022 site works began on the Imaging Facility at the Harry Perkins Institute of Medical Research building located on the QEII Medical Campus. Fit out of the allocated space and procurement of the equipment is underway, with the facility expected to be operational in mid-2023.

Clinical Researcher Training Program

In 2022 WAHTN convened a working group of representatives from across the health research sector to address the decline in the number of front-line clinical staff with higher degree training in research. Following subsequent consultation with the sector and clinical staff, a proposed program was presented to the Office of Medical Research & Innovation (OMRI) at the WA Department of Health, which resulted in the launch of the \$6 million “Clinician Researcher Training Program” by the WA Future Health Research & Innovation (FHRI) Fund.

Worldwide over the last 50 years there has been an increasing gap between health science discovery and clinical translation. Contributing to this gap is the decline in the number of front-line clinical staff with higher degree training in research. The flow on effect has resulted in a reduction in the academic workforce, which is essential for training the clinical workforce of the future, and an ever-increasing demand on the current clinical academic staff. To address this problem WAHTN convened a working group comprised of WA Universities, the five Metropolitan and Country Health Services and associated Research Foundations.

Several meetings were held in 2022 by the working group, led by Professor Melinda Fitzgerald (Curtin University) and Professor Gary Geelhoed (WAHTN), aiming to develop a unique training program for Higher Degree Research (HDR) specifically designed for local clinicians.

In 2022, WAHTN carried out a survey among clinical staff working in Health Services to determine the extent and nature of financial support required by clinicians to pursue HDR studies. The 375 completed surveys encompassed a broad range of career stages and various disciplines, including medical,

allied health, nursing, and midwifery. In addition, the survey gathered information on the factors that motivate or impede clinicians in their decision to undertake HDR studies. Feedback from survey participants highlighted the absence of a systematic mechanism to allocate time for HDR studies and provide funding to ensure financial equity, both of which have created significant obstacles for HDR students.

The working group used the survey findings to develop a report entitled "Higher Degrees in Health Sciences: A Proposal for a Strategic Partnership between WA State Government, Universities, Metropolitan Health Services, and Research Foundations in Perth," which was then submitted to OMRI at the WA Department of Health.

The report was well received and resulted in the WA FHRI Fund announcing the Clinician Researcher Training Program. This \$6 million program will build the clinician researcher workforce by providing scholarships for clinicians to undertake a clinically-focused degree by research at a WA university.

WAHTN will continue to actively support this initiative by facilitating a comprehensive mentoring program for the participating clinicians, ensuring they have access to the support and guidance they need to become successful clinician researchers in WA.



National Initiatives

The Women's Health Research Translation and Impact Network (WHRTN)

Funded by the National Women's Health Research, Translation & Impact Network (WHRTN), WAHTN launched the Women's Health Research Alliance WA (WHRL) in 2022. This platform will bring together WA women's health researchers to foster collaboration as well as empowering women in research.

In 2020 the National WHRTN received over \$5 million in funding from the Medical Research Future Fund. Part of this funding was used to establish state-based women's health research networks to leverage and strengthen large-scale national collaborative efforts to improve women's health and deliver research, translation, and impact in agreed priority areas. These priority areas align with the current National Women's Health Strategy and include a focus on preconception, pregnancy, postpartum and intrapartum health, reproductive health, sexual health, healthy lifestyle, nutrition, obesity prevention, violence and abuse prevention and healthy ageing.

WHRL is committed to

- Partnering, engaging, training and empowering women in priority setting, research, and translation
- Building capacity in women researchers across under-represented groups, diverse disciplines, and Indigenous researchers
- Delivering research, translation, and impact in agreed priority areas

WHRL held its official launch event on 13 September 2022 at the Lawrence Wilson Art Gallery, University of Western Australia (UWA).





Women researchers and women's health researchers came together for this sold-out event to hear an inspiring keynote talk from Professor Anna Nowak, the Deputy Vice Chancellor (Research) at UWA. Anna is a medical oncologist and clinician scientist and her speech "Fall seven times, and get up eight – research, resilience, and the power of purpose" gave an insight into the obstacles Anna has faced as a woman researcher. The audience also heard from WAHTN's Executive Director, Professor Ian Overall, and WHRL co-leads Associate Professor Jennifer Stone and Dr Jacqueline Frayne. Finally, the WHRTN Early and Mid-Career

Researchers Awardees, Associate Professor Georgia Halkett, and Dr Anne-Marie Eades, and the WHRTN Emerging Leaders Fellowship Awardee, Associate Professor Ravani Duggan, gave the audience an insight into the experiences their awards opened for them. The launch event concluded with a networking event, giving the attendees a chance to meet new people, forge new relationships and chat to Anna, Ian, Jennifer, and Jacque.

In addition to the launch event, WHRL has also held a mentoring session for the WHRTN Early and Mid-Career Researchers Awardees and the WHRTN Emerging Leaders Fellowship Awardee.

WHRL is continuing to promote women's health research and women researchers in 2023 with a "Women's Health Research" session at the Science on the Swan conference and more mentoring sessions planned.

"As an early career researcher, I understand that research career advancement can be challenging for many women, and this is even more so during our current COVID pandemic. Workplace interruptions can be hard, especially for clinicians. One of the Network's aims is to build a workforce development mentoring and leadership strategy for early and mid-career researchers in order to increase research and translation capacity"



DR JACQUELINE FRAYNE
UWA, WHRL CO-LEAD

National Wound Care Initiative

"Every Australian with a wound is entitled to the same high standard of care regardless of where they are, the type of wound or who is treating the wound"



PROFESSOR GARY GEELHOED
WAHTN EXECUTIVE DIRECTOR

JAN -JUL 2022

Wound care is a serious public health issue, affecting 400,000 hospital and residential-care patients and incurring some \$4 billion of treatment costs nationally.

In June 2018 the Minister for Health wrote to the Australian Health Research Alliance (AHRA) "I would like to see part of this new funding targeted towards wound management research." Since then, AHRA has researched wound management in Australia including a high-level review of the current environment and discussions with some key stakeholders. The AHRA National Wounds Initiative is the result of those investigations and consultations, and has focused on four main areas:

- Ascertaining the actual costs of wound care
- Updating the 2016 Australian Standards for Wound Prevention and Management
- Training and Education in Wound Care
- A Coordinated National Program of Research.

The AHRA National Wound Initiative was jointly coordinated by WAHTN and Health Translation Queensland.

WAHTN led the work on ascertaining the actual cost of wound care and updating the 2016 Australian Standards for Wound Prevention and Management.

Project 1: Ascertaining the Actual Cost of Wound Care

The aim of this project was to provide evidence to inform reimbursement of wound treatment costs for all Australians. This was achieved by determining the number and type of wounds and their treatment costs (consumables and labour) in a sample of Australian Hospitals, Residential Aged Care Facilities (RACFs), General Practices (GPs) and Community settings.

Surveys involving skin inspections and medical record audits were conducted amongst consenting adults over 18 years old in three Australian hospitals (816 patients, 748 wounds), three RACFs (205 patients, 99 wounds) and four GPs (137 patients, 181 wounds) based in WA and Queensland. Silverchain's clients' data for wounds treated on one day in June 2021 comprised the fourth cohort used in this analysis (1,347 patients, 2,068 wounds).

Data from 21,189 clients with 49,234 wounds treated by Silver Chain Group during the financial year 2020/2021 were used to determine the mean and median costs of consumables and labour to treat wounds.

With Biostatistician and Health Economist input, the costs to treat all wounds surveyed in the four cohorts were modelled against Silverchain's 2020/2021 data. Using this method, costs for all wound types were determined. This work has been published in Wound Practice and Research 2023. (Wilkie J et al. Determining the actual cost of wound care in Australia. Wound Practice and Research 2023)

The study demonstrates the significant burden of wound care in Australia and provides insight into strategies to significantly reduce this burden and to support best practice in wound care. The research has been presented to the Federal Minister for Health and is currently under discussion with Treasury to inform reimbursement of wound treatment costs.

Project 2: Update the Australian Standards for Wound Prevention and Management

WAHTN, in partnership with Wounds Australia, developed the 4th Edition of the Australian Standards for Wound Prevention and Management (2023), which are based on Wounds Australia's previous editions of the Standards (2002, 2010, 2016). The process was overseen by a national panel of acknowledged wound management experts and was sent to relevant stakeholders across Australia for review.

The new edition, which will be available on the Wounds Australia website, aligns with the standards of specific health professions, including allied health.

The Standards provide a contemporary, evidence-based framework for delivery of best practice in wound prevention and management to facilitate high quality and safe clinical practice that optimises outcomes for Australians with, or at risk of, wounds. The document presents new standards, including a standard on wound prevention and a standard that addresses the use of digital technology in wound care, including telehealth.

Significantly, the 4th Edition of the Australian Standards for Wound Prevention and Management (2023) includes standards specific to wound service providers, in addition to the standards for health professionals and workers delivering or supporting wound care.

WAHTN would like to acknowledge:

- Prof Keryln Carville, Dr Kathleen Finlayson, Dr Rhonda Kerr, Mr Shih Ching Fu, Silver Chain Group, the administrators and staff of Sir Charles Gairdner Hospital, Armadale Hospital, Princess Alexandra Hospital, Third Avenue Surgery, Illawarra Medical Centre, Salisbury Medical Centre, Inala Primary Care, Hall and Prior Aged Care Homes (Belmont, Leighton and Karingal Green), School of Nursing QUT, Silver Chain Group Inc., The University of Western Australia, Queensland University of Technology, Curtin University, University of Notre Dame Australia and all of the surveyors for their contribution to the wound costing project
- Prof Keryln Carville, Prof Emily Haesler and Wounds Australia for their contribution to updating the standards
- The Australian Government's Medical Research Future Fund (MRFF) as part of the Rapid Applied Research Translation program (MRF9100013 and MRF9100006) for financial support of these projects.



Prof Keryln Carville, Jo Wilkie, Dr Tanya Tuffrey

AHRA Consumer and Community Involvement Initiative

Consumer and Community Involvement (CCI) brings a unique perspective to all areas of research including planning, policy, funding, evaluation and reporting, as well as participation in the research project. Extensive research in Australia and internationally provides compelling evidence that the involvement of consumers in health and medical research achieves many benefits.

WAHTN co-led the Australian Health Research Alliance (AHRA) CCI National Initiative with Sydney Health Partners from 2018-2021. The Initiative has developed shared priorities and delivered a national framework and principles to ensure consumer and community involvement is intrinsic to and embedded in research, reflecting a genuine sharing of power, mutual trust and shared belief in its value.

Through this AHRA has achieved:

- Australia's first ever national survey of the nature and extent of consumer and community involvement in health research
- A formal alliance with Consumers Health Forum of Australia with a joint position statement
- Establishing national priorities which have resulted in:
 - » A practical 'how to' guide to consumer and community involvement in health and medical research
 - » Co-design of a national online knowledge hub to share resources, knowledge, expertise and tools. Funding has been sourced for the development of the hub.
 - » A report on the optimal strategies and tools to measure the impact of consumer and community involvement in research
 - » Progressing the Establishment of an International Consumer and Community Involvement Alliance



The CCI Handbook

WAHTN led the work on the development of the CCI Handbook. The CCI Handbook is the first 'how-to' guide for embedding CCI in research. It is designed for researchers, consumers, organisations, and funders, and incorporates templates and useful resources. The CCI Handbook was launched in November 2021, and is now available online. The NHMRC recognises the complementarity between its CCI Statement, its CCI Toolkit and the Handbook. The Handbook is being used to develop a CCI audit tool and will form the basis of four online training modules - for researchers, consumers, funders and research organisations.

WAHTN and the Melbourne Academic Centre for Health (MACH) co-led the work on the establishment of an International Consumer and Community Involvement Alliance. To date, a feasibility study into the establishment of an International Consumer and Community Involvement Alliance has been conducted. The concept of the Alliance is supported by a number of countries, and we are now moving to Planning Phase 2; the establishment of the Alliance, through a country to country “arrangement”. It is anticipated the Alliance will be announced at the inaugural CCI Conference which is planned for Perth in 2024.

AHRA CCI Network. The AHRA CCI National Initiative is now transitioning to an AHRA CCI Network which will provide a platform for all AHRA members and other key stakeholders across Australia. This Network will be led by WAHTN, Monash Partners and Maridulu Budyari Gumal (SPHERE).

WAHTN is exploring the establishment of a Global Centre of Excellence in CCI in Western Australia, which we hope to align with an inaugural CCI Conference in 2024.

Acknowledgements

The current AHRA CCI co-leads, WAHTN, SPHERE and Monash Partners, would like to acknowledge:

- Sydney Health Partners, and WAHTN, which co-managed the delivery of the National CCI initiative from 2018-2021.
- Health Translation South Australia, Sydney Health Partners, NSW Regional Health Partners as co-leads of the study into tools for measuring CCI Impact
- MACH and WAHTN as co-leads of the study into the feasibility of an internal CCI alliance
- Monash Partners and SPHERE as co-leads of the CCI Knowledge Hub initiative



WAHTN

Western Australian Health Translation Network